

Laboratory	SCOTCH TEST	Cod.Mod.IO238.12 del 09/05/2024 Rev. 01
------------	--------------------	---

DETECTION OF OXYURIASIS EGGS – *Enterobius vermicularis* – SCOTCH TEST

Equipment:

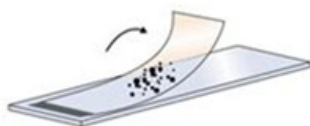
- Transparent scotch tape
- Storage slide
- Depressor or object with flat tip
- Collect the sample as soon as you wake up in the morning, before washing yourself.
- Using a pair of scissors cut a piece of scotch taper (5-6 cm). The piece of adhesive tape must be a bit shorter than the slide.
- Place the scotch taper over the depressor



- Place the scotch tape gently but firmly around the anus on the perianal area for 15-20 seconds.



- Remove the adhesive tape from the anus and place (stretch) the tape onto the slide.



Deliver the sample within two hours to the laboratory from 8:00 to 10:30 a.m.